

Read Me First!

MapCreate™ 6.2 Easy Mode Quick Reference

MapCreate 6.2 makes creating a high-detail custom map faster and easier than ever before. This 6-step instruction sheet will give you all the necessary skills to work MapCreate's new easy mode, MapSelect.

If you are a first-time user, or if your computer skills are a bit rusty, we **strongly recommend** you start with MapSelect. It's the best way to quickly make a basic, pre-defined GPS map with maximum detail. In MapSelect mode, all map borders are pre-drawn for you in approximately 8 MB chunks. Making a map is as simple as point, click and save.

If you are working with GPS data or want greater control over customizing your maps, you will need to use the more advanced MapCreate operation mode. Complete, easy-to-read instructions are in the manual and on-line help file. However, you *don't* need to read the *entire manual* to get going. A one-page advanced mode quick reference is on page 22. And, if you take a moment to peek at Section 1, we'll explain how you can skip around the manual to find just the information you need for a particular function.

Getting Started

If you haven't installed the program yet, you need to grab the manual and turn to Section 2, Installation, on page 13. (**Quick hint:** You're going to run the setup.exe file on the MapCreate CD. If you have MapCreate versions 6.0 or 6.1, you **must** uninstall them first, before installing MapCreate 6.2!)

NOTE:

Before you start the program, you should also make sure your MMC card reader is installed and working correctly. Follow the installation instructions that came with your card reader, your computer and the computer's operating system. We recommend that you actually test the card reader by copying some file to a card and then deleting it. You will also need know the card reader's drive letter when you start MapSelect.

How to select and save a pre-defined custom map

1. Insert an MMC or SD card in your card reader. Each pre-drawn map takes about 8 MB of space, so two maps will fit on a 16 MB card, four will fit on a 32 MB card, and so forth.
2. Begin by clicking the Windows **START** button and choosing **MAPCREATE 6** from the menu. When the mode selection box appears, choose **START MAPSELECT**.
3. The full map display appears. Red lines represent pre-drawn custom map borders. Move your mouse pointer over a map segment and it

turns gray, showing it's selected. At the bottom of the screen, a selected map's Map Name and Map Size are both displayed, as well as disk space available.

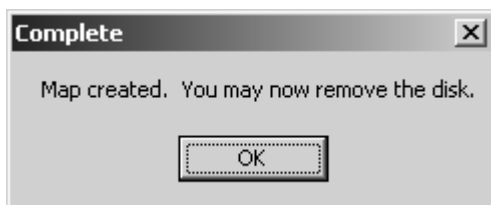
4. Locate the area you want to create a map of. Move the mouse pointer over the area to highlight and select it, then click on the selected map. (If you used the Typical or Compact installation option, the program will prompt you to insert the appropriate CD.)

5. MapSelect displays a message asking if you want to save the map to a particular drive. If the drive letter is correct for your MMC card reader, click **YES** and go to step 6.

NOTE:

If the drive letter is incorrect, click **No**, then click the **SAVE To** button on the tool bar. Select the right drive letter, then click **OK**. Now, select and click on your desired map area. When the Save Map Message appears, click **YES**.

6. Wait while the program builds the map. A progress box shows the map building and saving process under way. ***Do not remove the MMC card from the reader until the completion message appears, telling you it's safe to take out the card!*** After the completion message appears, click **OK** to clear the message. Now you can make another map (if there's room on the card) or you can remove the card from the reader and install it in your GPS unit. Click **FILE | EXIT** to close MapSelect.



MapSelect completion message.

Final Notes: For a map of Hawaii or an area where line congestion makes it hard to select, you can move the map and zoom in or zoom out for easier viewing. Click the **CENTER MAP** button, then click near the area you want. Now repeatedly click the **ZOOM IN** button to enlarge the view. Click the **SELECT MAP** button, then proceed with step 4. To return to the original display, click the **FULL MAP** button.